



We are aluminium

Installation manual base plates



Introduction

The purpose of this manual is to provide instructions so that installers and service operatives can competently and safely mount or install the Hydro base plates.

Installers and service operatives must have the required competencies, knowledge and experience to safely work on equipment and operate mechanical tooling needed for the installation of the Hydro base plate.



ATTENTION:

- Read this manual carefully before installing the base plate.
- Always follow the instructions in this manual.
- Always wear personal protection equipment; helmet, boots, gloves and safety glasses.
- Hydro recommends carrying out a visual inspection every year and re-tightening the bolts/locknuts

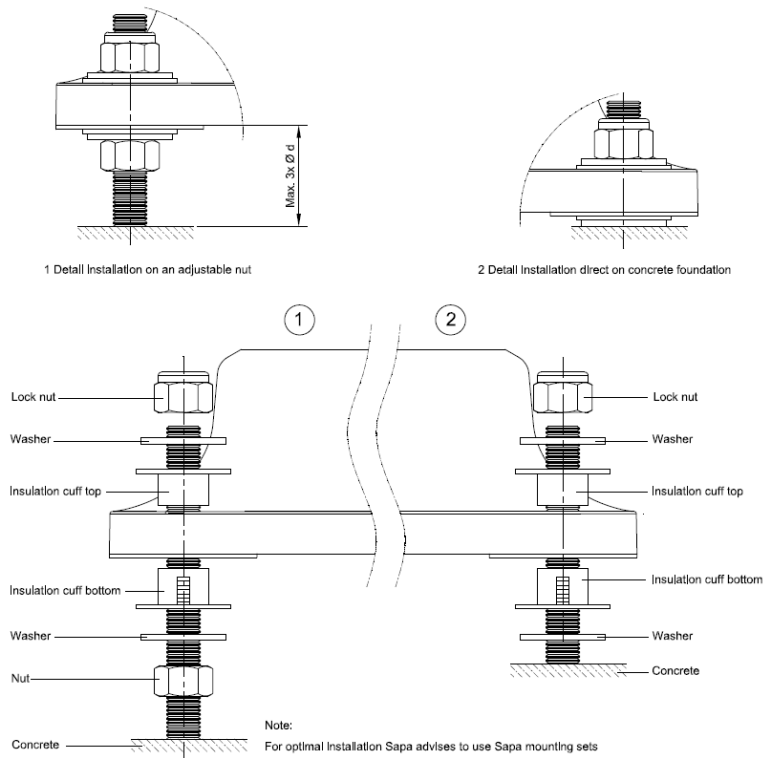
Disclaimer

Despite the careful development and compilation of this installation manual, it is possible that incorrect or incomplete information is included. Hydro is not liable for any damage, directly or indirectly, related to the use of the information in this manual.

Installation instructions 1-part base plate

Note: Also applicable for mât fusible

Use table 1 (see page 4) as guidance to determine the minimal length of the anchors.



Installation on adjustable nut

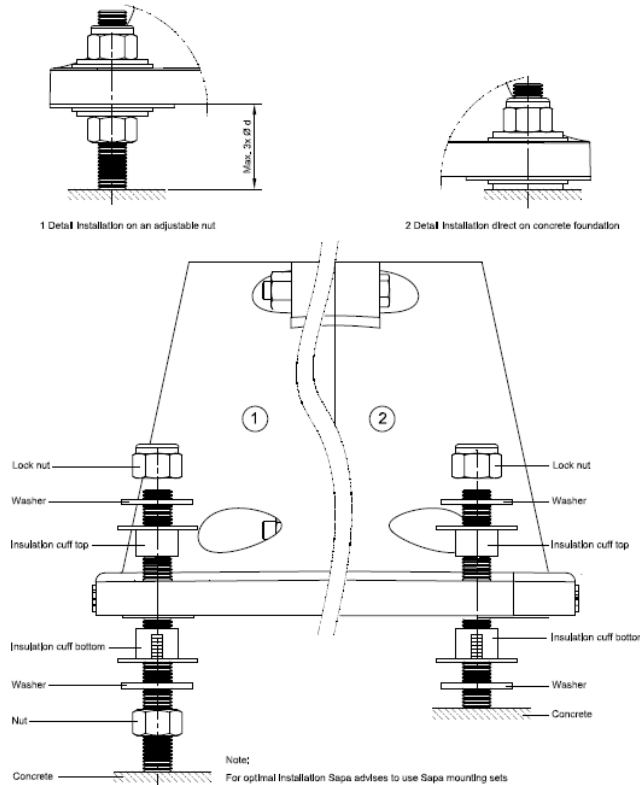
1. Screw a hexagonal nut on the anchor
2. Place the washer (Hydro) on top of the nut
3. Repeat step 1-3 for each anchor
4. Mount the insulation cuffs bottom and top into the Hydro base plate
Note: In some cases, the insulation cuffs are pre-mounted
5. Place the base plate on the anchors.
6. Put the washers on the anchors
7. Screw the lock nuts to just above the base plate
8. Tighten the lock nuts

Installation direct on concrete foundation

1. Place the washer (Hydro) on the anchor
2. Repeat step 1 for each anchor
3. Mount the insulation cuffs bottom and top into the Hydro base plate
Note: In some cases, the insulation cuffs are pre-mounted
4. Place the base plate on the anchors
5. Put the washers on the anchors
6. Screw the lock nuts to just above the base plate Tighten the lock nuts

Installation instruction 2-part base plate

Use table 1 (see page 4) as guidance to determine the minimal length of the anchors



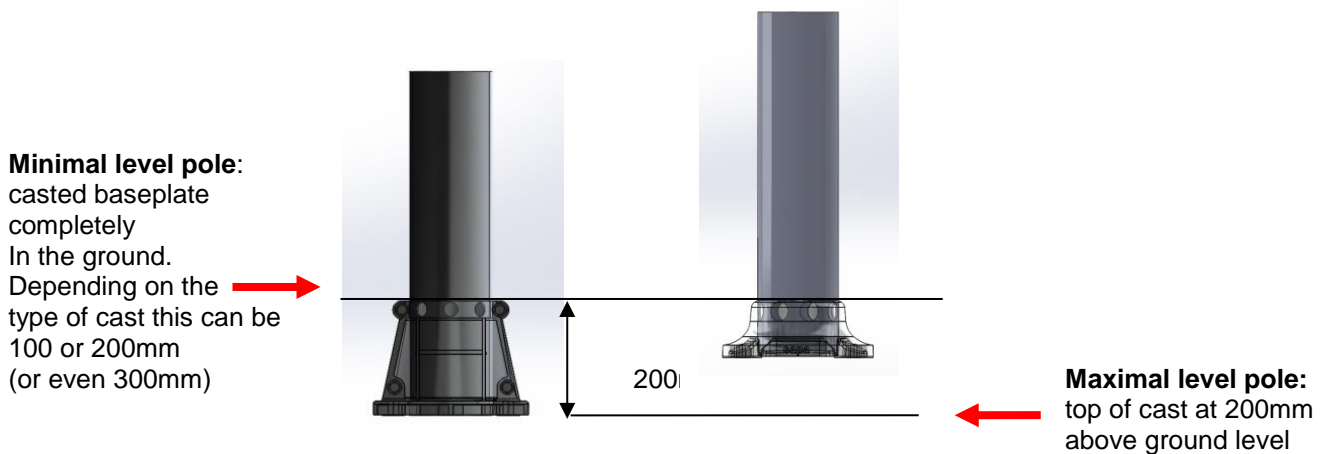
Installation on adjustable nut	Installation direct on concrete foundation
<ol style="list-style-type: none"> 1. Screw a hexagonal nut on the anchor 2. Place the washer (Hydro) on top of the nut 3. Repeat step 1-3 for each anchor 4. Mount the insulation cuffs bottom and top into the base plate Note: In some cases, the insulation cuffs are pre-mounted 5. Place the base plate on the anchors. 6. Put the washers on the anchors 7. Screw the lock nuts to just above the base plate 8. Tighten the lock nuts 	<ol style="list-style-type: none"> 1. Place the washer (Hydro) on the anchor 2. Repeat step 1 for each anchor 3. Mount the insulation cuffs bottom and top into the base plate Note: In some cases, the insulation cuffs are pre-mounted 4. Place the base plate on the anchors 5. Put the washers on the anchors 6. Screw the lock nuts to just above the base plate Tighten the lock nuts

Minimal length of thread/anchors (above ground):

Base plate	D114 - D145				D145		D165		D175		D200	
Pitch	200x200				300x300		300x300		300x300		300x300	
Thread size	M12	M14	M16	M18	M20	M24	M20	M24	M20	M24	M20	M24
Min. length of thread [mm] (1.)	100	105	120	130	140	170	140	170	140	170	140	170
Min. length of thread [mm] (2.)	60	65	70	75	85	95	85	95	85	95	85	95

Table 1: minimal length of thread/anchors. (With the advised thread size for each size base plate).

Installation level in case of mât fusible (France)



Note: the red arrow is ground level in both extremes; the 200mm comes from STRMTG: GT3-DTW-Obstacles Fixes V2. The pole needs to break below 200mm above ground level with maximal 570 daNm.