



We are aluminium

Manual HiLo column with winch



Introduction

The purpose of this manual is to provide instructions so that installers and service operatives can operate the Hydro HiLo column with winch in a responsible and safe manner.

This manual provides information about the HiLo column with winch and any accessories. It is assumed that the installer / service technician has sufficient knowledge and experience to work on building construction and electrical installations. It is also assumed that the installer / service technician has the basic knowledge of safety and competence necessary to operate machines and tools required for the operation of the column.



ATTENTION:

- Read this manual carefully before using the HiLo column with winch.
- Always follow the instructions in this manual.
- Always wear personal protection equipment; helmet, boots, gloves and safety glasses.
- Remove all obstacles from your walk path before lowering.
- **During operation it is it is strongly advised not to stand in the area of the hinged arm.**
- Be aware of a possible high-top weight before lowering.
- The cord of the winch must be moved in free space and should not come into contact with any sharp objects.
- When the winch is operating, a movement of the arm must always be visible. If this is not the case, stop operating and check the winch.
- If visual damage to the cord is detected, raise the column carefully and contact Hydro.
- Never operate the column during high wind speeds.

Disclaimer

Despite the careful development and compilation of this manual, it is possible that incorrect or incomplete information is included. Hydro is not liable for any damage, directly or indirectly, related to the use of the information in this manual.

Operation of the HiLo column with winch

- Needed tools:
 - Ratchet tool with socket 24mm
 - Crank (included)
 - Door key



- Unlock the door by turning the bolts with the door key and remove the door.



- Unlock and remove the padlock
- Turn and remove the safety holder
- Unfasten the locking bolt using a tool ("dimension across flats 24mm"). The hinge column will then be UNLOCKED



- Install the lifting handle with hexagon extension piece on the axis of the winch.
- By unscrewing the winch (**counter clockwise**) the arm will come out. If the arm does not come out, bring the arm just past the dead point with your hand.
- Tilt the column by turning the winch. **If the winch is operated there must be a visual motion of the arm. If it does not, stop turning and check.**
- Keep turning until the column is tilted to the buffer (at the height of the hinge point). Make sure that the column is lowered slowly. Depending of the column height the angle is variable

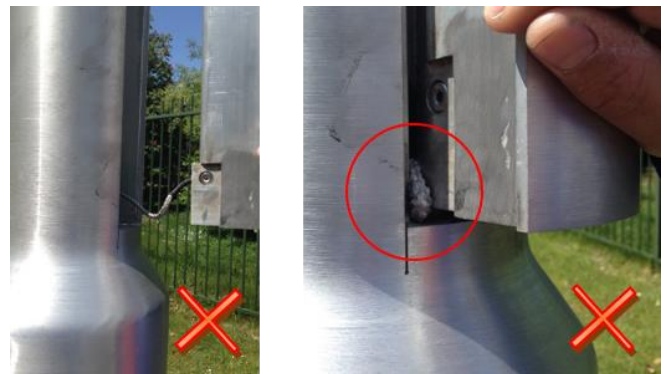


- After maintenance, the column can be raised. The reverse operations must be carried out.



Attention:

Make sure that the cord isn't twisted, when the column is tilt back into straight position. This to prevent that the cord will be stuck in between parts, which can lead to damage on the cord. Always keep a light tension on the cord!



Pole Products

Hydro Extrusion Drunen BV
P.O. Box 75
5150 AB Drunen
The Netherlands

Visiting address:

Alcoalaan 12
5151 RW Drunen
The Netherlands

www.hydroextrusions.com/poles

E: info.poleproducts.nl@hydro.com
T: +31 416 386 200

Registration No.

No. 17205924